








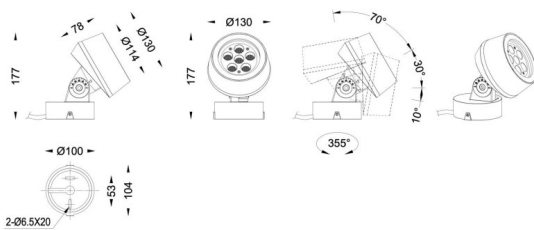
## BEAM MODULES

|                 |  |
|-----------------|--|
| Code article    | 86.OS01.2331.02  |
| Type de produit |  |
| Catégorie       | Projecteurs  |
| Famille         | BEAM   |
| Sous-famille    | BEAM MODULES   |
| Pictograms      | <div><div><div>220<br/>240 V</div></div><div><div>850°</div></div><div><div>CRI</div><div>80</div></div><div><div>SDCM</div><div>3</div></div></div> <div><div><div>Driver<br/>INCL.</div></div><div><div>On</div><div>Off</div></div><div></div><div></div></div> <div><div>50000h<br/>L70B10</div><div><div>IP</div><div>65</div></div><div><div>↺</div><div>335°</div></div><div><div>↻</div><div>90°</div></div><div><div>IK</div><div>05</div></div></div> |

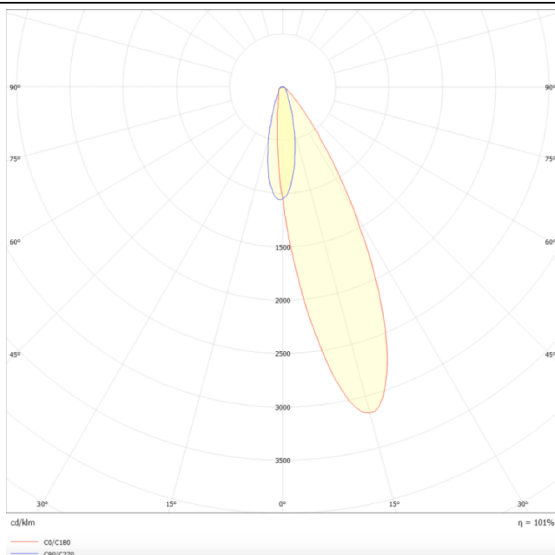
## Dimensions

|                                |                          |
|--------------------------------|--------------------------|
| <b>Product dimensions (mm)</b> | <b>130(Dia)X78(H) mm</b> |
|--------------------------------|--------------------------|

## Dessin technique



### Distribution photométrique



|                               |               |
|-------------------------------|---------------|
| Produit                       |               |
| Puissance système (W)         | 18            |
| Flux lumineux utile (lm)      | 1080          |
| Efficacité lumineuse (lm/W)   | 60            |
| Angle de faisceau             | 25            |
| Durée de vie                  | 50000h L70B10 |
| IP                            | 66            |
| Marque de la LED              | Osram         |
| Équipement                    | ON-OFF        |
| Durée de vie utile (h)        | 50000h L70B10 |
| Température de couleur (K)    | 3000          |
| Uniformité chromatique (SDCM) | SDCM3         |
| CRI                           | 80            |
| IK                            | IK08          |